

# Turnkey Office/Medical Suites 1025 W. Everett Road Lake Forest, IL

FOR LEASE: \$28/SF MG

Available: 2,462 Contiguous SF

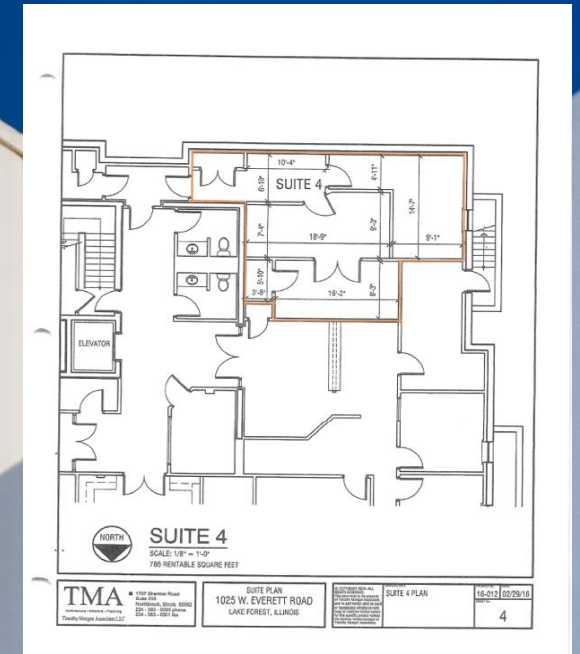
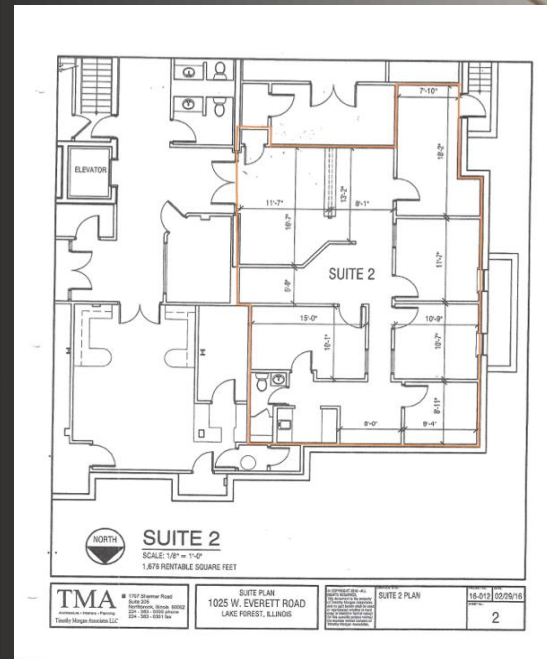


Ron Roberti – Broker  
847-651-0656  
[ron@resourcecommercial.net](mailto:ron@resourcecommercial.net)

Mark Brodson – Designated Managing Broker  
773-251-3666  
[Mark@resourcecommercial.net](mailto:Mark@resourcecommercial.net)

# Space Features

- Beautifully maintained professional Medical/Office Building
- High-end finishes and build-out
- Elevator Building
- Common Area Washrooms
- On-site and Remote Parking
- Two Suites available:
  - 786 SF
  - 1,676 SF



1025 W. Everett Road, Lake Forest, IL 60045



# Location Highlights

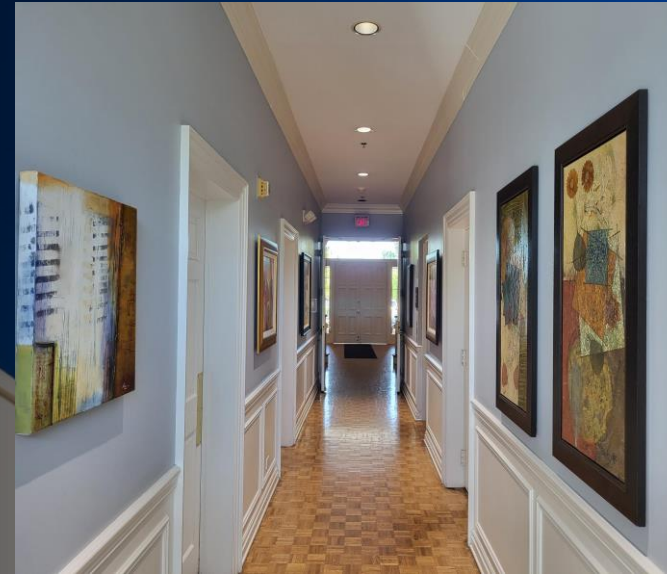
- Adjacent to redevelopment lot scheduled to include a national coffee chain and a three - story medical office building
- Walk to Metra
- Close to downtown businesses, shopping and dining



1025 W. Everett Road, Lake Forest, IL 60045

# Anchor Tenants

- Lake Forest Acute Care
- Lake Forest Dental
- McEssy Investment Company
- Iosue Associates
- Bradley Law Firm



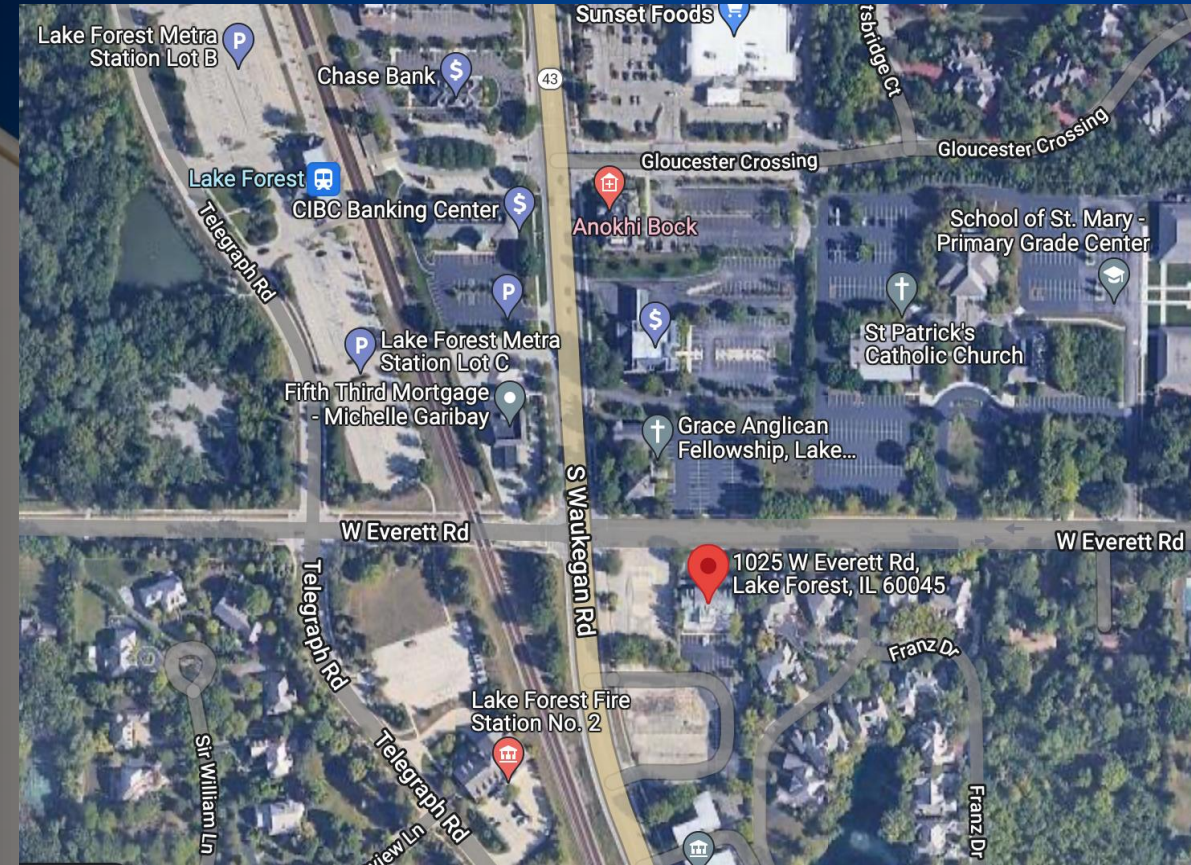
1025 W. Everett Road, Lake Forest, IL 60045

## Disclaimer

The information contained in the memorandum has been obtained from sources we believe to be reliable; however, Resource Commercial Advisors, or any of their officers, employees, or agents, has not verified, and will not verify any of the information contained herein and makes no warranty or representation whatsoever regarding the accuracy or completeness of the information provided. This memorandum does not purport to be all-inclusive or to contain all the information which prospective lessee or purchaser may desire. References to square footage or age are approximate. No legal liability is assumed or shall be implied with respect thereto. The owner expressly reserves the right at its sole discretion to reject any or all proposals or expressions of interest in the property and to terminate discussions with any party at any time with or without notice.

### Agency Disclosure

Ron Roberti ("Licensee") and Mark Brodson ("Licensee") of Resource Commercial Advisors is acting solely on behalf of the Owner or Lessor of the real estate and any information given to the Licensees by the Purchaser/Lessee may be disclosed to the Owner//Lessor.



Ron Roberti – Sr. Broker  
847-651-0656  
[Ron@resourcecommercial.net](mailto:Ron@resourcecommercial.net)

Mark Brodson – Designated Managing Broker  
773-251-3666  
[Mark@resourcecommercial.net](mailto:Mark@resourcecommercial.net)

1025 W. Everett Road, Lake Forest, IL 60045