

2400 N. Ashland Ave.  
Suite 250  
Chicago, IL 60614

Sublease thru 12/2025  
2,263 SF

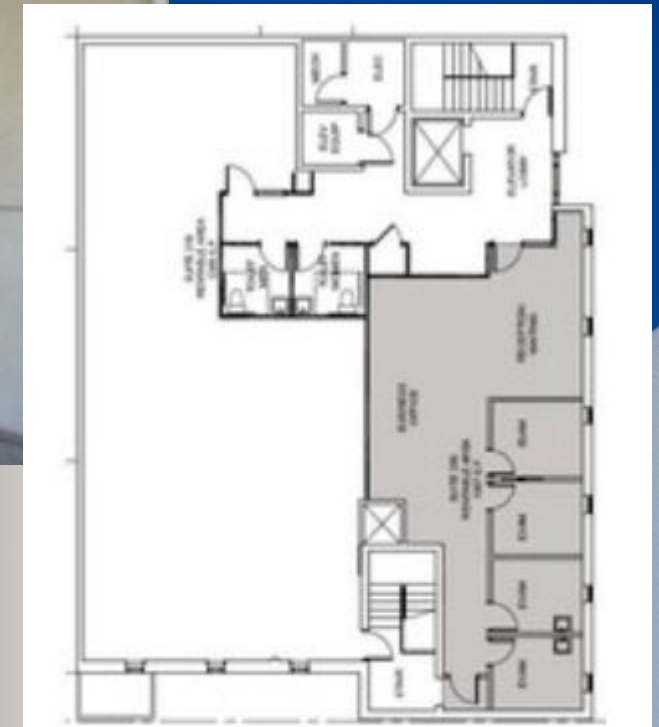


Chris Minchella – Broker  
773-828-9665  
[Chris@resourcecommercial.net](mailto:Chris@resourcecommercial.net)

Ron Roberti – Sr. Broker  
847-651-0656  
[Ron@resourcecommercial.net](mailto:Ron@resourcecommercial.net)

# Space Features

- 2nd Floor Sublet thru 12/2025
- 2,263 SF
- 5 Parking Spaces
- 3 Medical Offices
- 1 Operating Room
- Private Communal Area



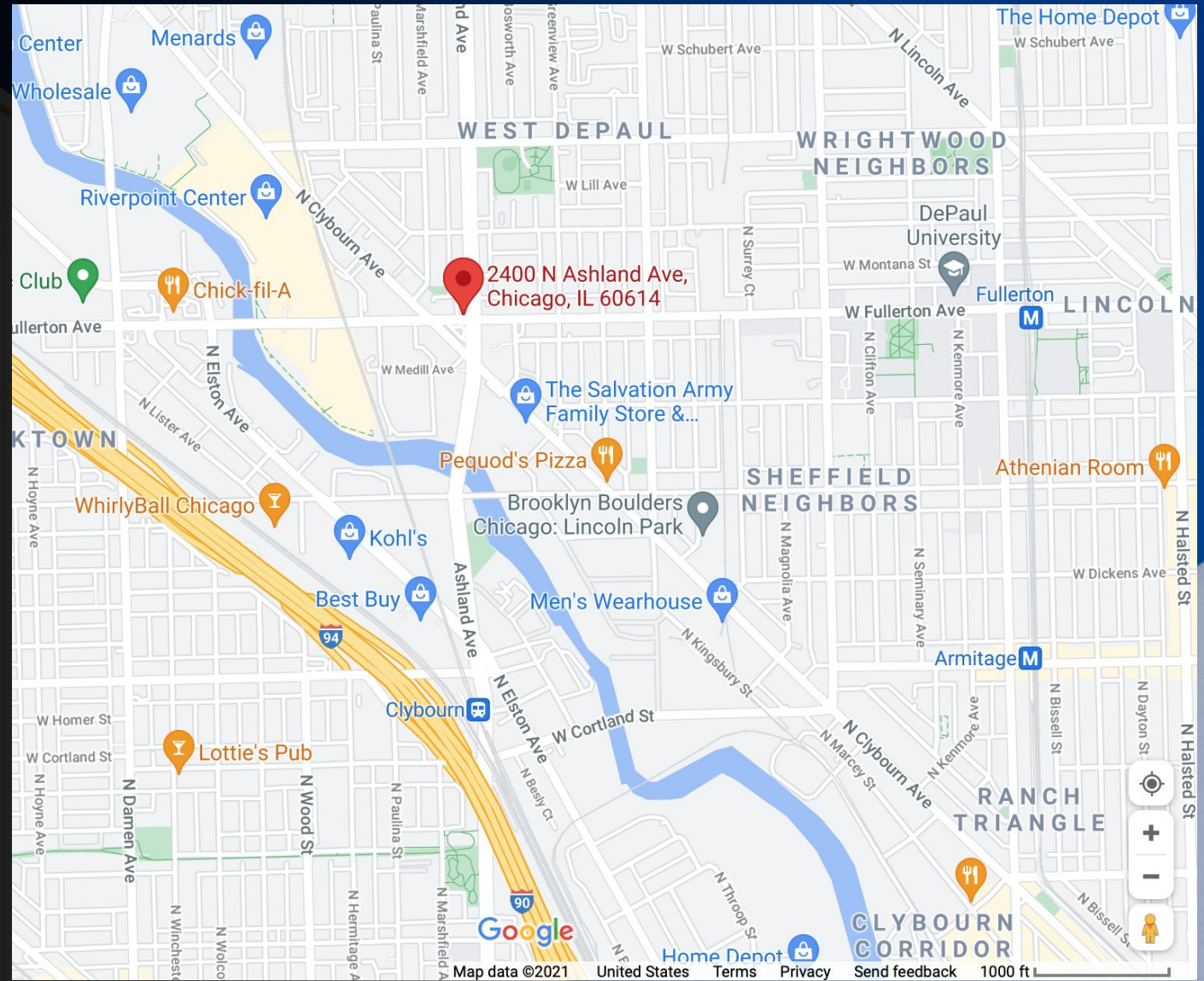
2nd Floor Plan



2400 N. Ashland Ave. Chicago, IL 60614

# Location Highlights

- Located at a heavily trafficked intersection
- Bus Line at intersection
- 1.5 miles from the Kennedy Expressway



2400 N. Ashland Ave. Chicago, IL 60614

## Disclaimer

The information contained in the memorandum has been obtained from sources we believe to be reliable; however, Resource Commercial Advisors, or any of their officers, employees, or agents, has not verified, and will not verify any of the information contained herein and makes no warranty or representation whatsoever regarding the accuracy or completeness of the information provided. This memorandum does not purport to be all-inclusive or to contain all the information which prospective lessee or purchaser may desire. References to square footage or age are approximate. No legal liability is assumed or shall be implied with respect thereto. The owner expressly reserves the right at its sole discretion to reject any or all proposals or expressions of interest in the property and to terminate discussions with any party at any time with or without notice.

## Agency Disclosure

Chris Minchella ("Licensee") and Ron Roberti ("Licensee") of Resource Commercial Advisors is acting solely on behalf of the Owner or Lessor of the real estate and any information given to the Licensees by the Purchaser/Lessee may be disclosed to the Owner//Lessor.



Chris Minchella – Broker  
773-828-9665  
[Chris@resourcecommercial.net](mailto:Chris@resourcecommercial.net)

Ron Roberti – Sr. Broker  
847-651-0656  
[Ron@resourcecommercial.net](mailto:Ron@resourcecommercial.net)



Site Plan