

# Medical/Office Suites 720 Osterman Ave Deerfield, IL

## AVAILABLE FOR LEASE

Second Floor – 840 sf. \$35 psf. Gross  
3,213 sf. \$35 psf. Gross  
4,053 sf. contiguous avail.

(Lights and outlets separately metered)

Third Floor – 616 sf. \$2,000 per month  
Full Gross Lease (all utilities inc.)

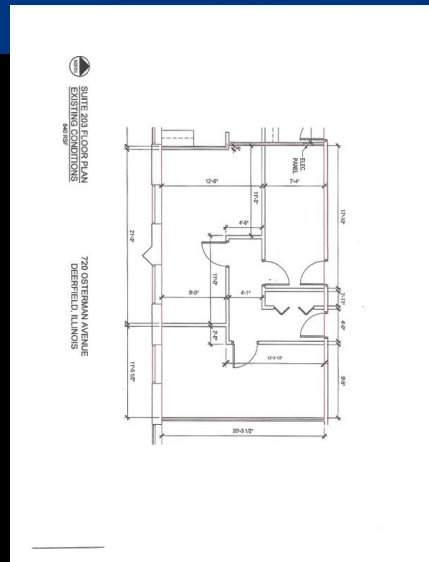


Ron Roberti – Broker  
847-651-0656  
[ron@resourcecommercial.net](mailto:ron@resourcecommercial.net)

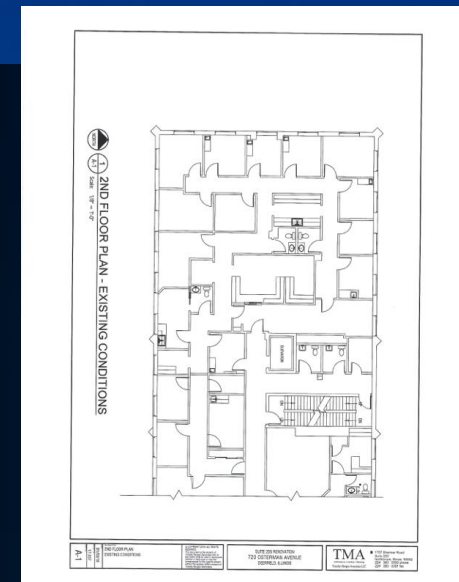
Mark Brodson – Designated Managing Broker  
773-251-3666  
[mark@resourcecommercial.net](mailto:mark@resourcecommercial.net)

# Features

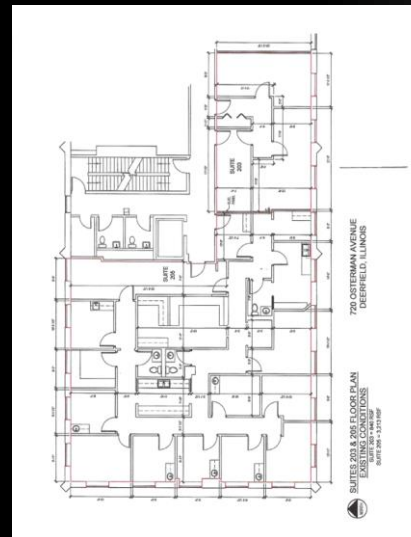
- Well maintained and managed Professional Medical/Office Building
- Plentiful surface parking
- Landlord offering Tenant Improvement incentives for suites 203 and 205
- Suite 301 – Move in ready for immediate occupancy, two pvt offices
- Suite 203 – Three private offices
- Suite 205 – Built-out for medical user. Three in suite washrooms, seven exam rooms with sinks, lab, nurse's station, reception, waiting room, multiple pvt. offices



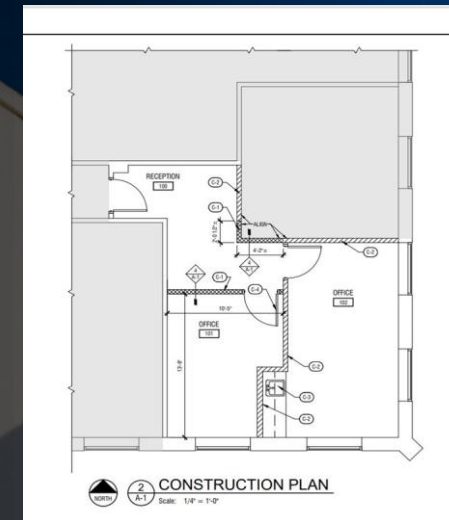
Suite 203



Suite 205



Suites 203 / 205 Contiguous

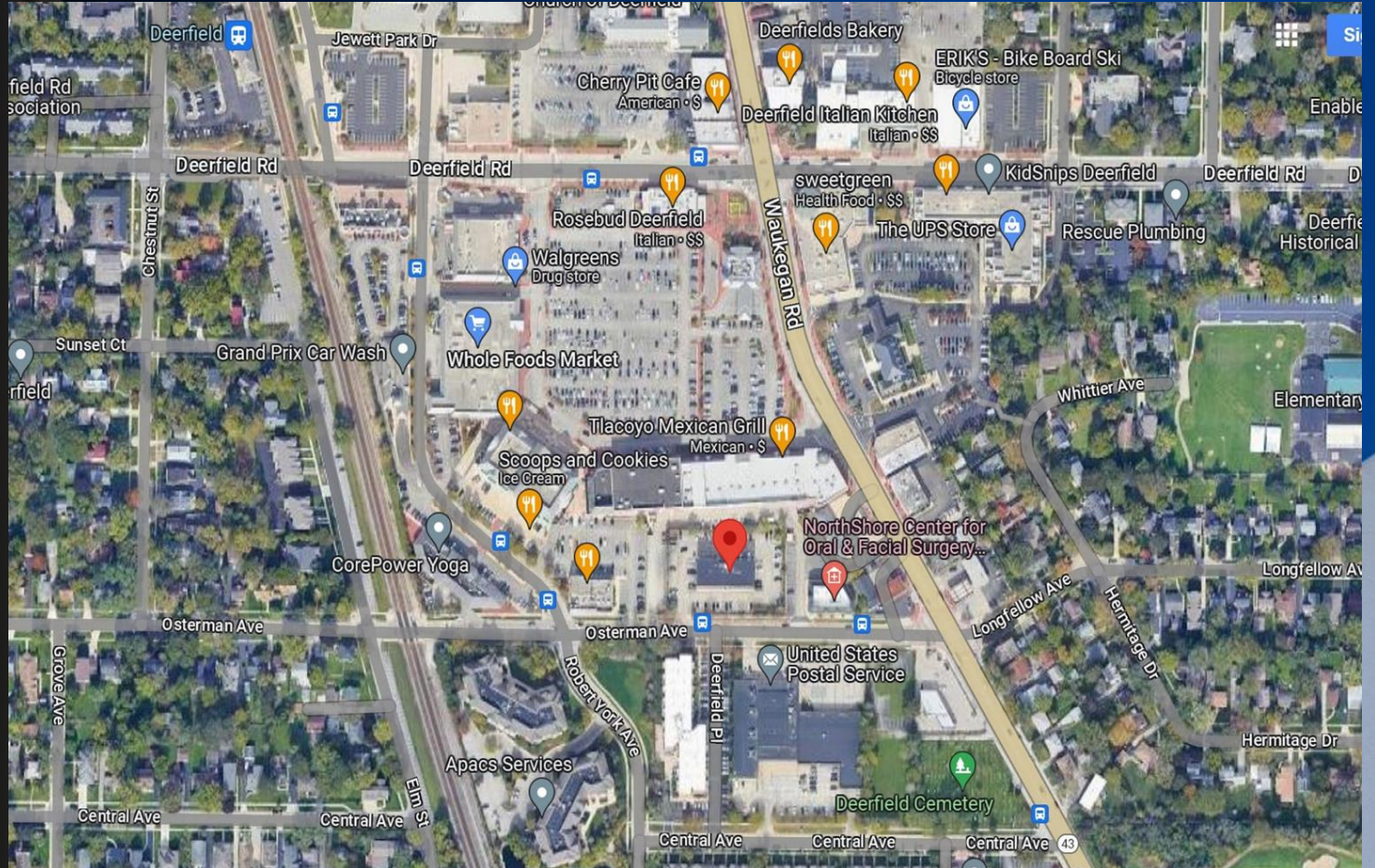


Suite 301



# Location Highlights

- Great Location with strong Deerfield demographics
- Easy access to Waukegan Road
- Close to USPS, Whole Foods, Walgreens, wide variety of dining, shopping, professional services
- Elementary and Middle Schools, numerous parks
- Close proximity to Deerfield and Lake Cook Metra Stations, I -94



720 Osterman Ave, Deerfield, IL 60015

# Co-Tenants

- A Jerry Crowley, DMD
- Sharone Shamir, DDS
- Northshore Oral Surgery and Dental Implants
- Deerfield Medical Associates
- Jarosz & Valente Orthodontics, PC
- Dr. Scott Arne, DDS, FAGD
- Wickery Psychological Services
- Dr. Mary Milka, Psy.D
- Compass Dental of Deerfield
- Sunila M Rao, Psy.D
- Julie O Grant, L.C.S.W.
- Great Smiles Dental
- Jerrold R Hoppe, DDS
- Michael Hoppe, DDS
- Rebecca A Hoppe, DDS



720 Osterman Ave, Deerfield, IL 60015

## Disclaimer

The information contained in the memorandum has been obtained from sources we believe to be reliable; however, Resource Commercial Advisors, or any of their officers, employees, or agents, has not verified, and will not verify any of the information contained herein and makes no warranty or representation whatsoever regarding the accuracy or completeness of the information provided. This memorandum does not purport to be all-inclusive or to contain all the information which prospective lessee or purchaser may desire. References to square footage or age are approximate. No legal liability is assumed or shall be implied with respect thereto. The owner expressly reserves the right at its sole discretion to reject any or all proposals or expressions of interest in the property and to terminate discussions with any party at any time with or without notice.

### Agency Disclosure

Ron Roberti ("Licensee") and Mark Brodson ("Licensee") of Resource Commercial Advisors is acting solely on behalf of the Owner or Lessor of the real estate and any information given to the Licensees by the Purchaser/Lessee may be disclosed to the Owner//Lessor.

---



Ron Roberti – Sr. Broker  
847-651-0656  
[Ron@resourcecommercial.net](mailto:Ron@resourcecommercial.net)

Mark Brodson – Designated Managing Broker  
773-251-3666  
[Mark@resourcecommercial.net](mailto:Mark@resourcecommercial.net)

720 Osterman Ave, Deerfield, IL 60015