

# MEDICAL - DENTAL - OFFICE SPACES AVAILABLE FOR LEASE

601 W Central Road, Mt. Prospect, IL



- Strong Demographics
- Located 1 Block from busy Route 14 Corridor
- Easy Access to Metra Station
- General, Pediatric and Specialty Dental Tenants
- Heated underground garage for Tenants
- Year Built: 1970

**\*\* Exclusive of Real Estate Taxes, CAM & Insurance**

## AVAILABILITY

SUITE 6	1,342 SF	\$12.50 NNN **	Medical / Dental
SUITE 7	765 SF	\$12.50 NNN **	Medical / Dental / Office
SUITE 8	635 SF	\$12.50 NNN **	Dental / Medical
SUITE 10	1,546 SF	\$12.50 NNN **	Medical / Dental / Office

Ron Roberti - Sr. Broker  
847-651-0656  
Ron@resourcecommercial.net

Mark Brodson – Designated Managing Broker  
773-251-3666  
Mark@resourcecommercial.net



# SUITES

## SUITE 6



## SUITE 7



## SUITE 8



Ron Roberti - Sr. Broker  
847-651-0656  
Ron@resourcecommercial.net

Mark Brodson – Designated Managing Broker  
773-251-3666  
Mark@resourcecommercial.net



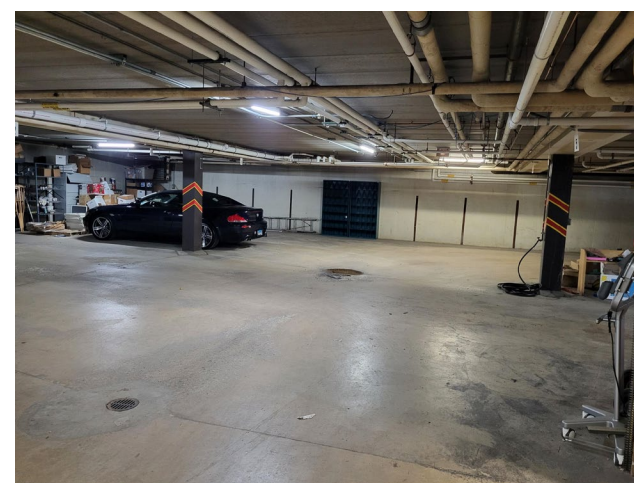


# SUITES - GARAGE

## SUITE 10



## PARKING - STORAGE



Ron Roberti - Sr. Broker  
847-651-0656  
Ron@resourcecommercial.net

Mark Brodson – Designated Managing Broker  
773-251-3666  
Mark@resourcecommercial.net

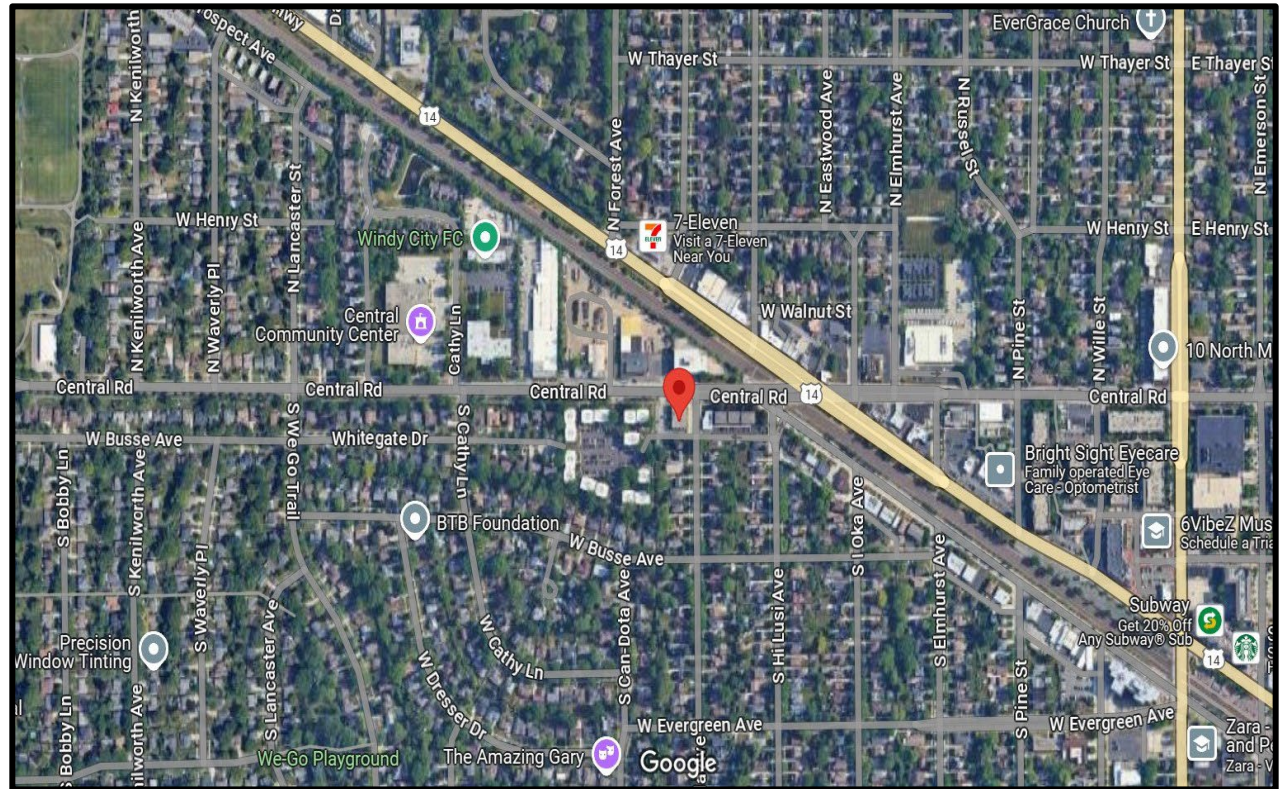




# Tenants - Community

## Dental - Medical Tenants Include:

- ❖ Dr. Russell Pollina – Pediatric / Ortho
- ❖ Dr. A. Chiambas – General Dentistry/ Implants
- ❖ Dr. Yelena Revish – General / Cosmetic Dentistry
- ❖ Rainbow Dentistry – General Dentistry
- ❖ Dr. R Ryan – Periodontist / Implants Dentistry
- ❖ Dr. B Cabrera – Pediatric Medicine



**DISCLAIMER**  
**601 W Central Road, Mt. Prospects, IL, 60056**

The information contained in the memorandum has been obtained from sources we believe to be reliable; however, Resource Commercial Advisors, or any of their officers, employees, or agents, has not verified, and will not verify any of the information contained herein and makes no warranty or representation whatsoever regarding the accuracy or completeness of the information provided. This memorandum does not purport to be all-inclusive or to contain all the information which prospective lessee or purchaser may desire. References to square footage or age are approximate. No legal liability is assumed or shall be implied with respect thereto. The owner expressly reserves the right at its sole discretion to reject any or all proposals or expressions of interest in the property and to terminate discussions with any party at any time with or without notice.

**Agency Disclosure**

Ron Roberti ("Licensee") and Mark Brodson ("Licensee") of Resource Commercial Advisors are acting solely on behalf of the Owner or Lessor of the real estate and any information given to the Licensees by the Purchaser/Lessee may be disclosed to the Owner/Lessor.