

WAREHOUSE AND OFFICES AVAILABLE FOR LEASE

851 SETON COURT – WHEELING, IL, 60090



- 18' clear ceilings
- 2 – 12' x 16' DID
- Over 800 amps – 3 phase power
- 2 – in unit washrooms
- Easy access to shared recessed dock
- Floor drains
- Multi-tenant building

AVAILABILITY

SUITE 100	9,984 SF	\$11.75 Modified Gross	600 SF. Updated Office
4 – 1st floor offices	126-1,381 SF	\$250-1,200 per month	Call for details

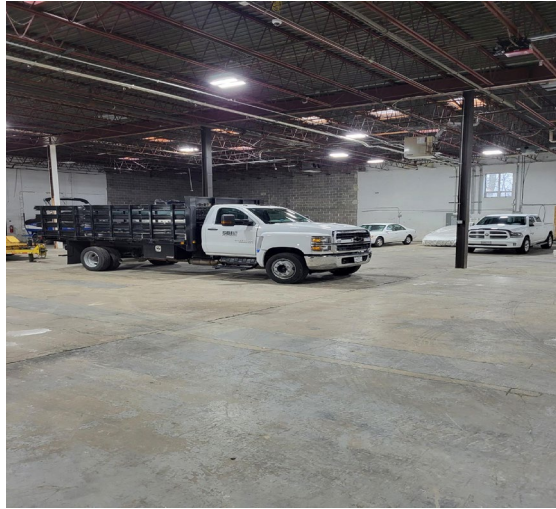
Ron Roberti - Sr. Vice President
847-651-0656
Ron@resourcecommercial.net

Mark Brodson – Designated Managing Broker
773-251-3666
Mark@resourcecommercial.net



SUITES

SUITE 100

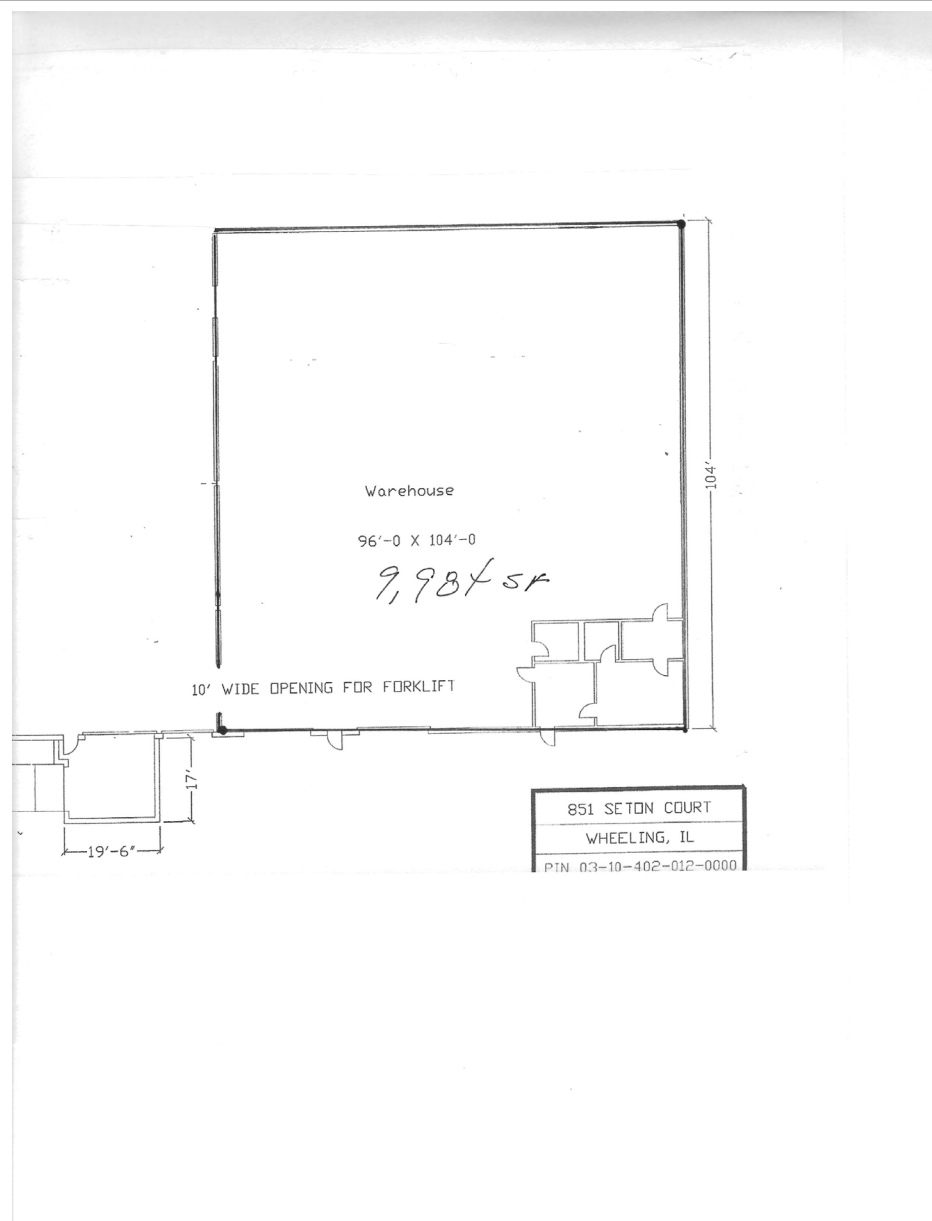


Ron Roberti - Sr. Vice President
847-651-0656
Ron@resourcecommercial.net

Mark Brodson – Designated Managing Broker
773-251-3666
Mark@resourcecommercial.net



WAREHOUSE

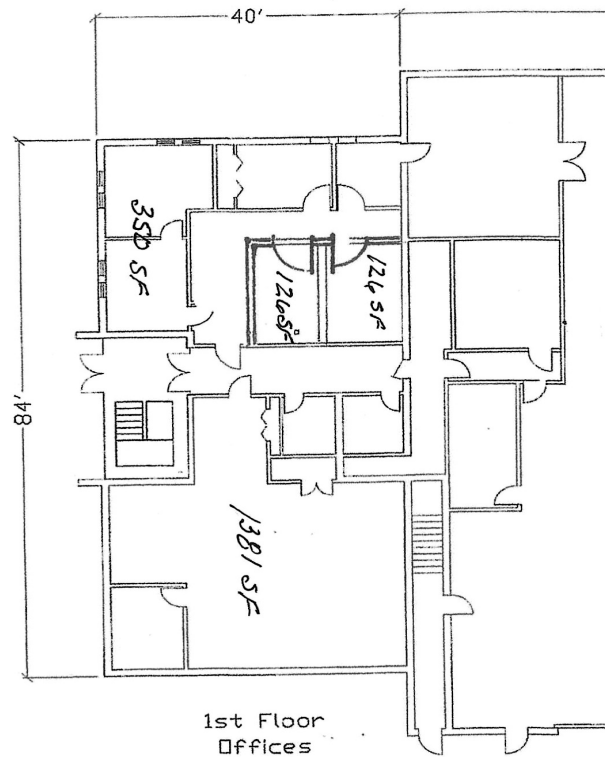


Ron Roberti - Sr. Vice President
847-651-0656
Ron@resourcecommercial.net

Mark Brodson – Designated Managing Broker
773-251-3666
Mark@resourcecommercial.net



OFFICE SPACES

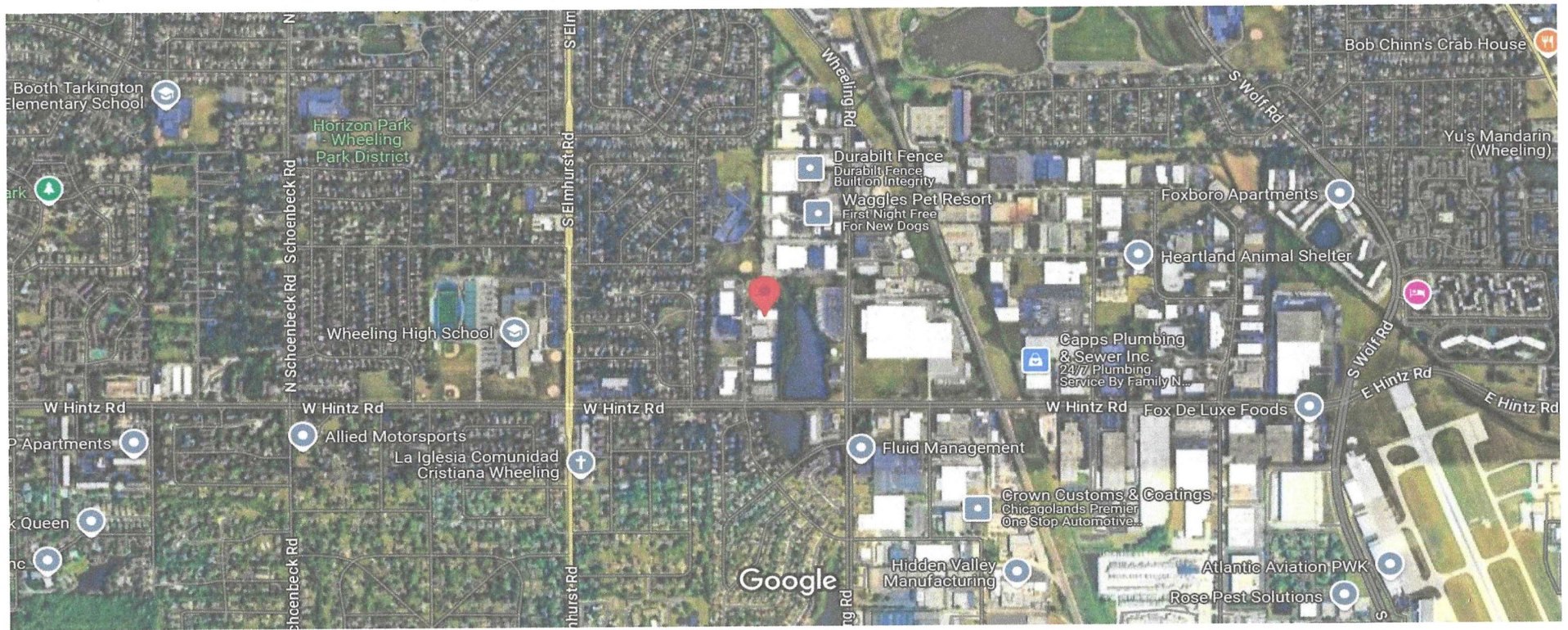


Ron Roberti - Sr. Vice President
847-651-0656
Ron@resourcecommercial.net

Mark Brodson – Designated Managing Broker
773-251-3666
Mark@resourcecommercial.net



Aerial



Ron Roberti - Sr. Vice President
847-651-0656
Ron@resourcecommercial.net

Mark Brodson – Designated Managing Broker
773-251-3666
Mark@resourcecommercial.net



DISCLAIMER
851 Seton Court, Wheeling, IL, 6009-

The information contained in the memorandum has been obtained from sources we believe to be reliable; however, Resource Commercial Advisors, or any of their officers, employees, or agents, has not verified, and will not verify any of the information contained herein and makes no warranty or representation whatsoever regarding the accuracy or completeness of the information provided. This memorandum does not purport to be all-inclusive or to contain all the information which prospective lessee or purchaser may desire. References to square footage or age are approximate. No legal liability is assumed or shall be implied with respect thereto. The owner expressly reserves the right at its sole discretion to reject any or all proposals or expressions of interest in the property and to terminate discussions with any party at any time with or without notice.

Agency Disclosure

Ron Roberti (“Licensee”) and Mark Brodson (“Licensee”) of Resource Commercial Advisors are acting solely on behalf of the Owner or Lessor of the real estate and any information given to the Licensees by the Purchaser/Lessee may be disclosed to the Owner/Lessor.